

Santa Susana Field Laboratory

BMP Factsheet

Year Constructed

2014

Target Constituents

Lead, dioxins, and total suspended solids (TSS)

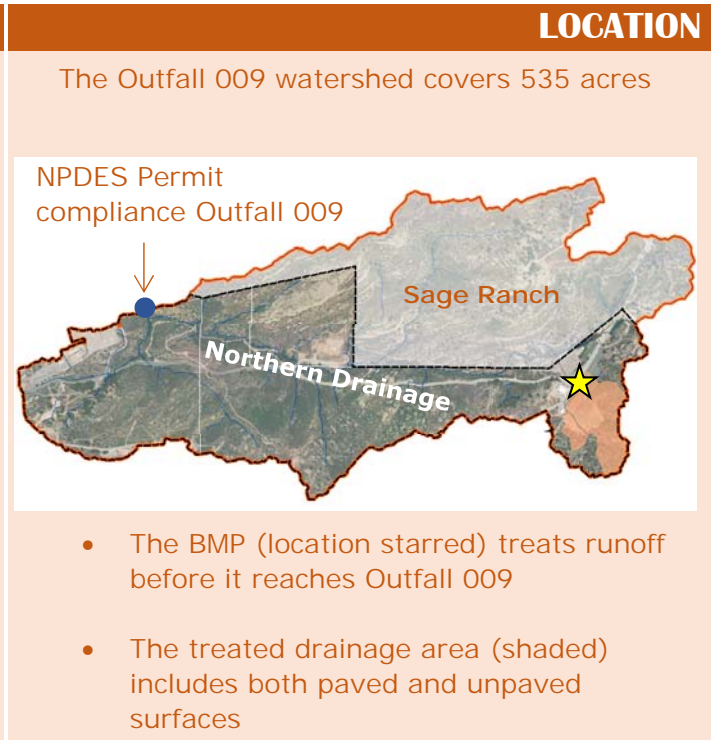
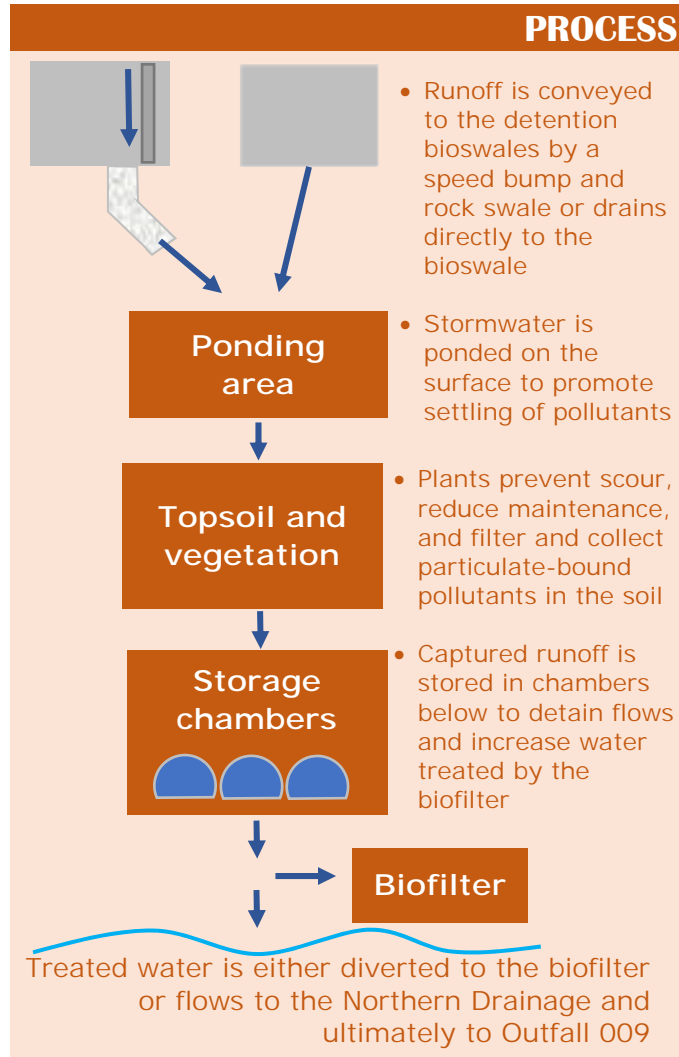
Drainage Area

18.2 acres

Treatment Processes

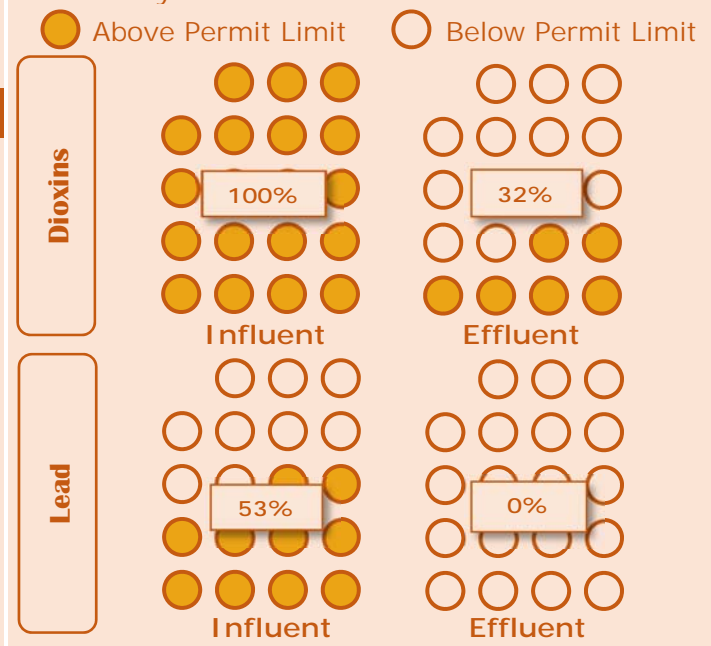
Detention, settling, filtration, and biofiltration

Detention Bioswales



PERFORMANCE

19 paired samples have been collected to date. The number of samples exceeding the OF009 Permit Limit decreases from influent to effluent, or is generally unchanged when concentrations are already low.



SNAPSHOT



Santa Susana Field Laboratory

BMP Factsheet

Year Constructed

2017

Target Constituents

Lead, dioxins, and total suspended solids (TSS)

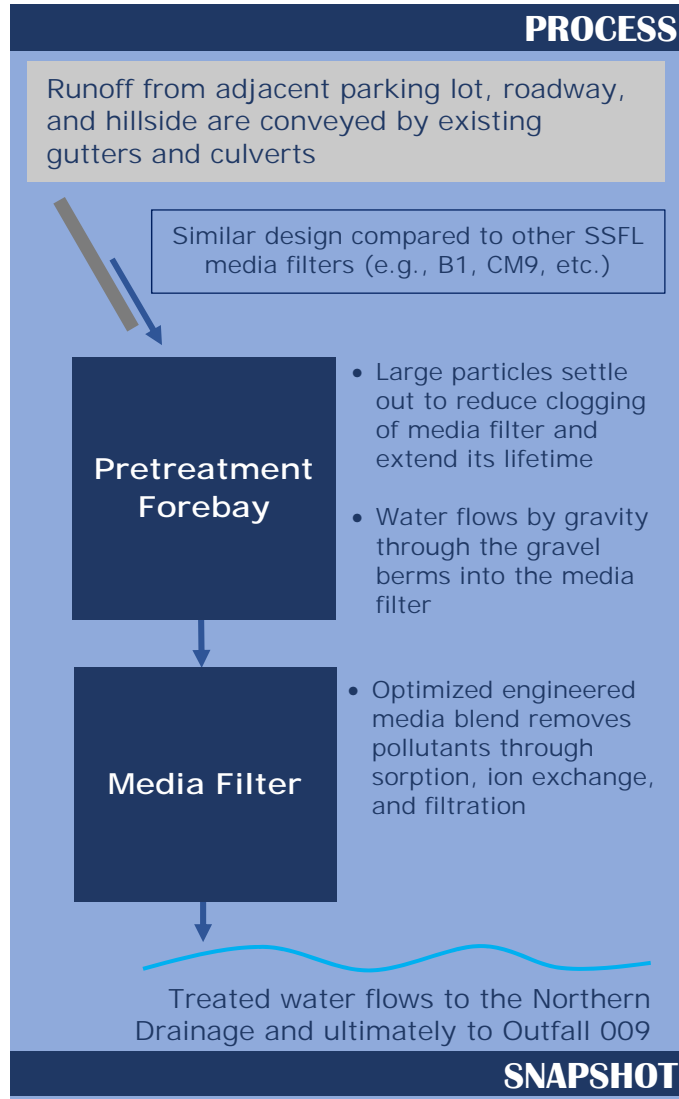
Drainage Area

5.1 acres

Treatment Processes

Settling, sorption, ion exchange, and filtration

Upper Lot Media Filter



Santa Susana Field Laboratory

BMP Factsheet

Year Constructed

2013

Target Constituents

Lead, dioxins, and total suspended solids (TSS)

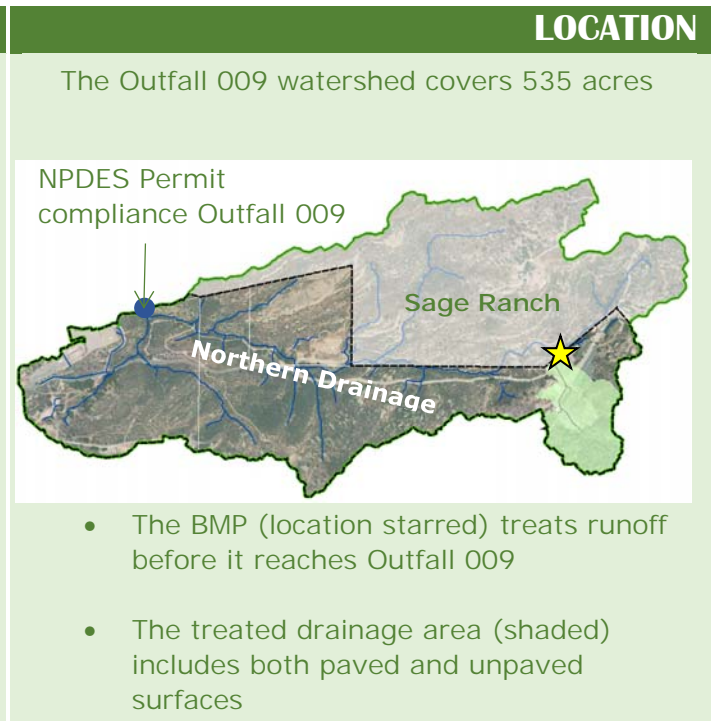
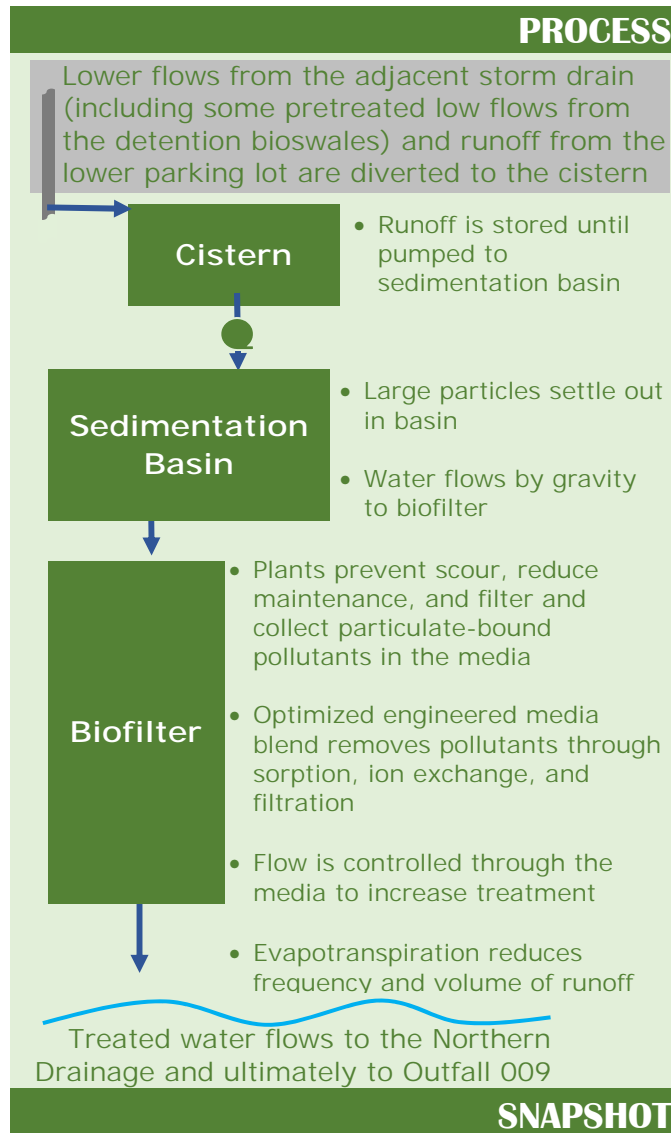
Drainage Area

30 acres

Treatment Processes

Settling, filtration, sorption, ion exchange, and biofiltration

Lower Lot Biofilter



SNAPSHOT



Santa Susana Field Laboratory

BMP Factsheet

Year Constructed

2009 (upgraded 2017)

Target Constituents

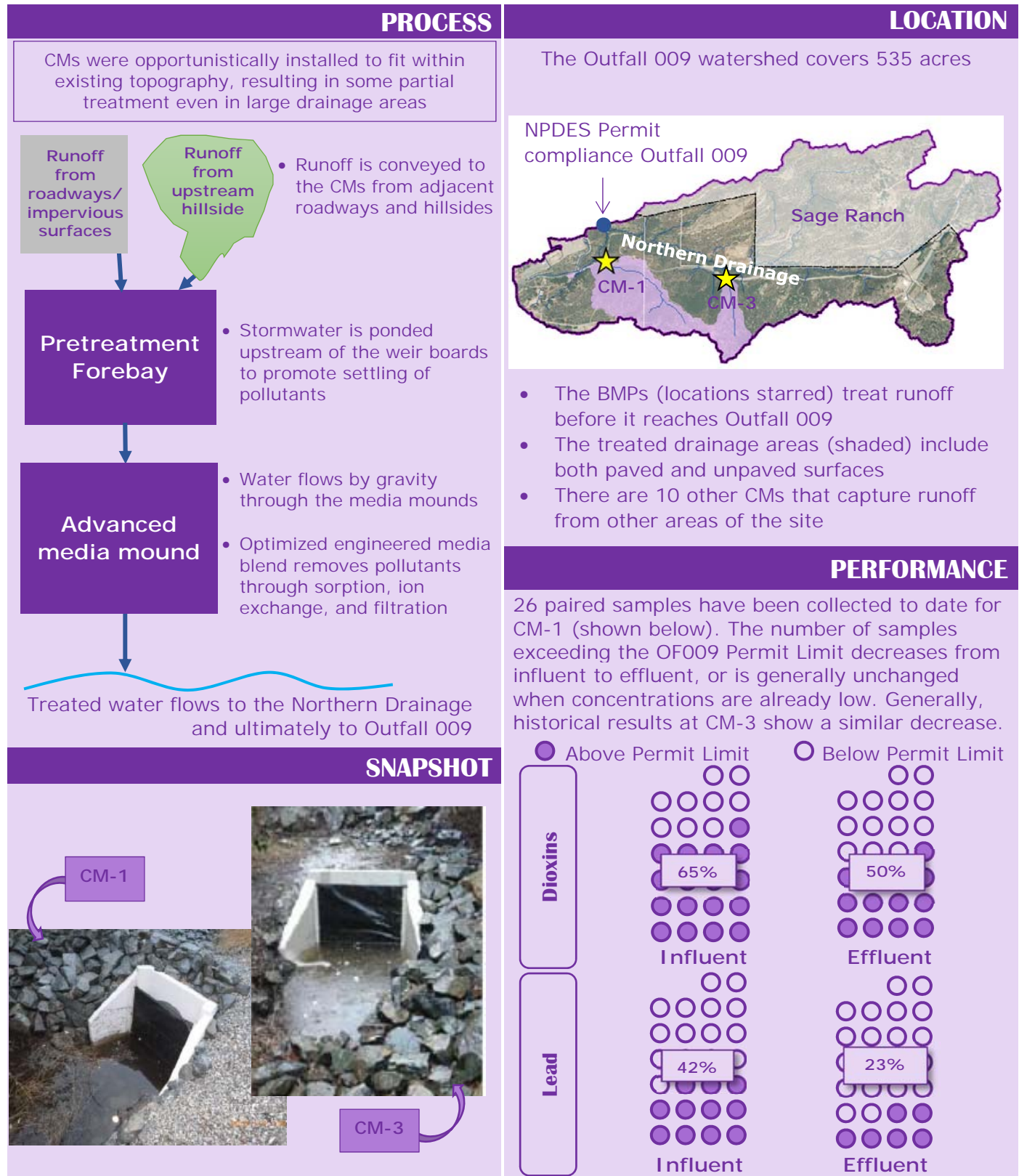
Lead, dioxins, and total suspended solids (TSS)

Drainage Area

CM-1: 43 acres; CM-3: 17 acres

Treatment Processes

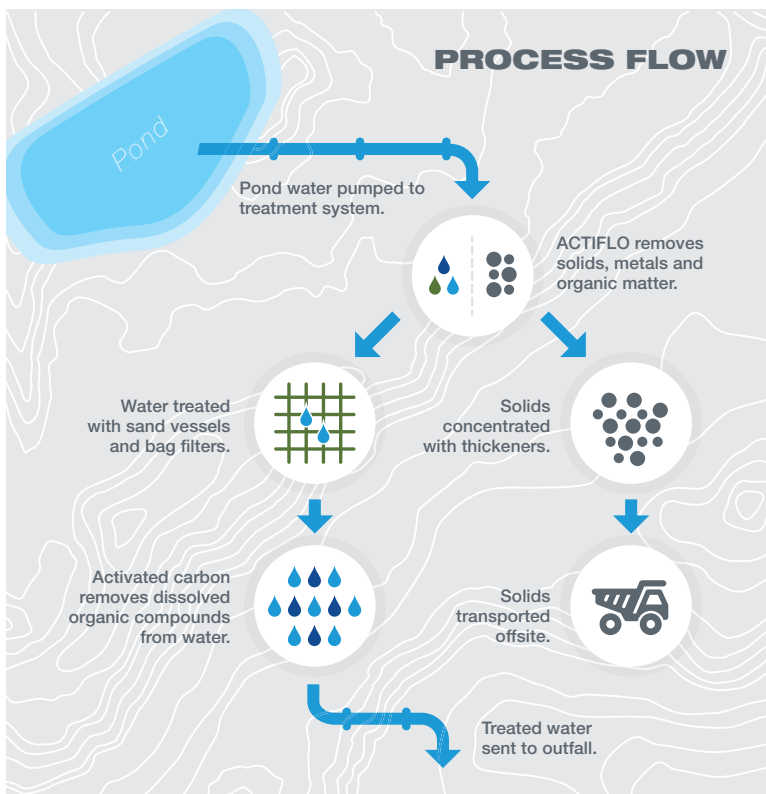
Settling, sorption, ion exchange, and filtration



CM-1/CM-3

Improving Stormwater Quality

Boeing uses two methods for treating stormwater at Santa Susana: active and passive. This water management strategy is a hybrid approach that combines state-of-the-art and natural processes.



ACTIVE TREATMENT

Boeing designed and constructed advanced stormwater treatment systems at Outfalls 011 and 018. These systems employ water treatment processes and chemicals similar to those used by city and county municipalities to make drinking water. The stormwater treatment process flow is outlined here.

TREATMENT BY THE NUMBERS



2.5 million gallons can be treated during rain events



2.5 swimming pools of water per hour can be treated by Outfall 018 system



Outfall 018 Stormwater Treatment System