

# Outfall 009 BMP and Performance Monitoring Locations A2LF and ELV Areas

## Base Map Legend

- Administrative Area Boundary
- Non Jurisdictional Surface Water Pathway
- RFI Site Boundary
- Surface Water Divide
- Drainage

## Figure Legend

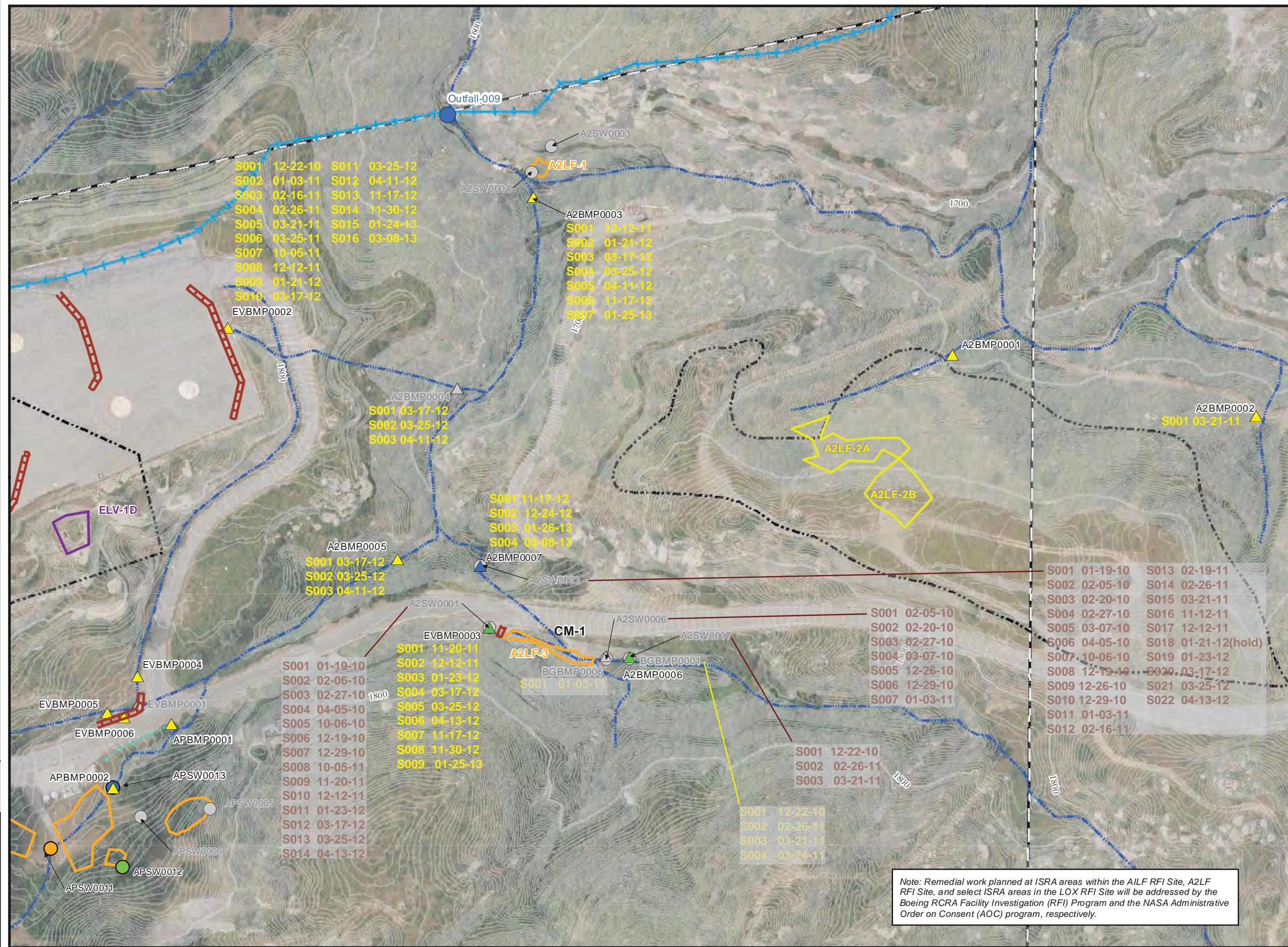
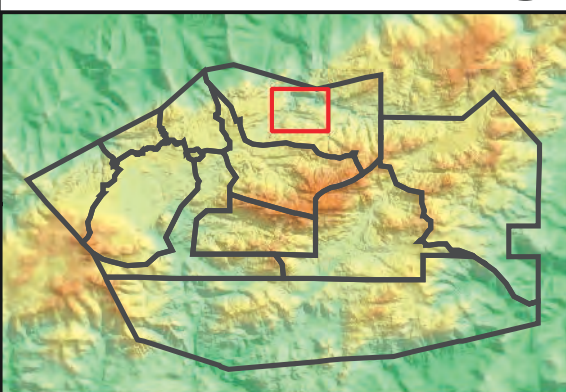
- Primary Downgradient Performance Monitoring Sample Location
- Upgradient Performance Monitoring Sample Location
- Secondary Performance Monitoring Sample Location
- Previous Performance Monitoring
- Potential BMP Subarea Monitoring Location
- Downstream Treatment BMP Monitoring Location
- Upstream Treatment BMP Monitoring Location
- Discontinued Potential BMP Subarea Monitoring Location
- ISRA Excavation Boundary
- Planned ISRA Area Boundary
- Former Planned ISRA Area Boundary
- Sandbags

### Note:

1. Aerial imagery from 2010 Sage Consulting.
2. Topographic contours from 2010 Sage Consulting.
3. Rationale for discontinuing monitoring at previous sample locations can be found in the text and/or tables of the 2012/2013 Rainy Season Sampling and Analysis Plan.
4. Inspection/sampling at offsite monitoring locations subject to property owner approval.

Path: \\SD-004\gisp\projects\rock3\ISRA\Figures\PerfMon\2012-2013 Rainy Season\A2LF\_Fig2-5.mxd Date: 8/28/2013

1 inch = 140 feet



Note: Remedial work planned at ISRA areas within the AILF RFI Site, A2LF RFI Site, and select ISRA areas in the LOX RFI Site will be addressed by the Boeing RCRA Facility Investigation (RFI) Program and the NASA Administrative Order on Consent (AOC) program, respectively.

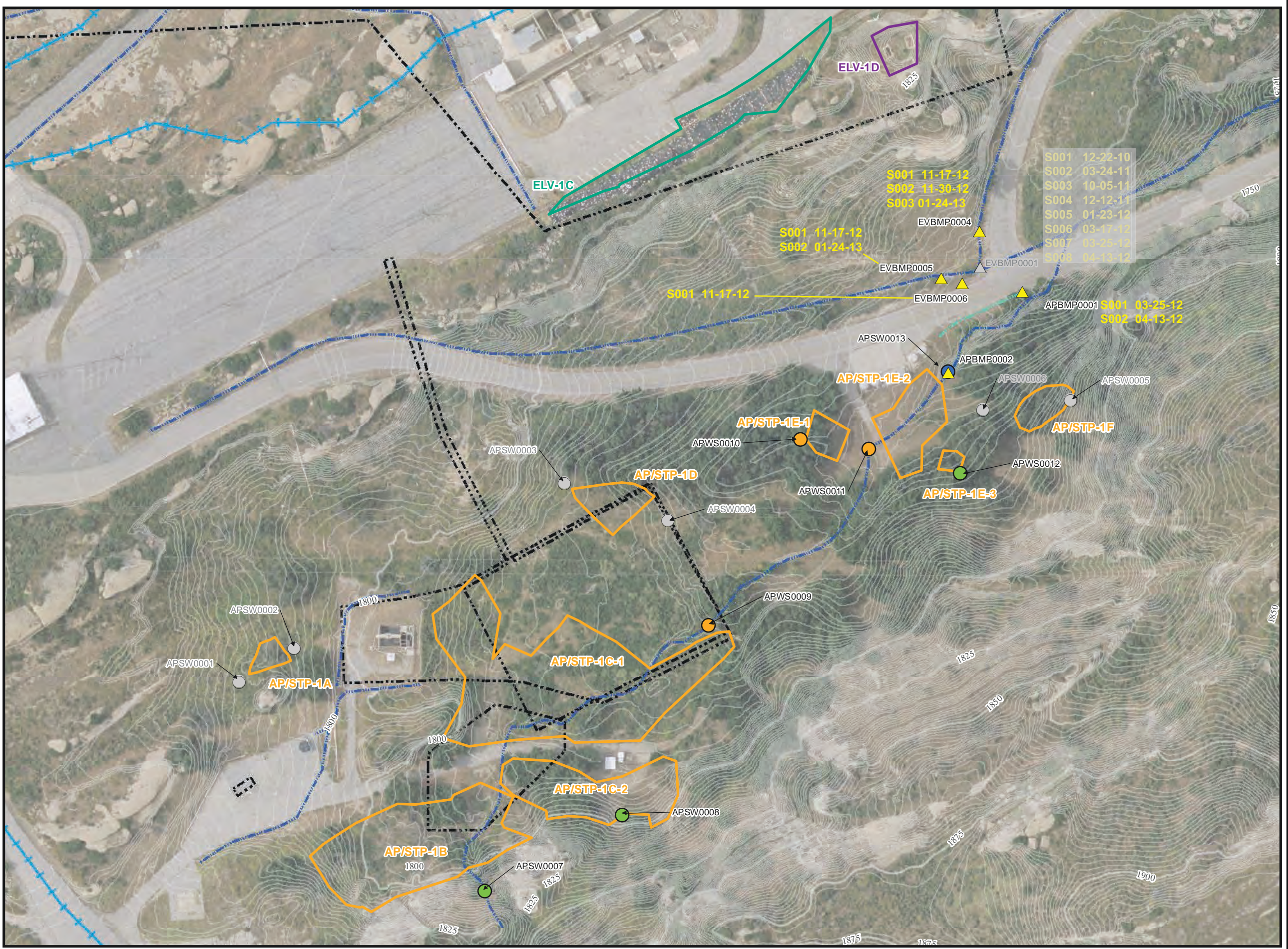
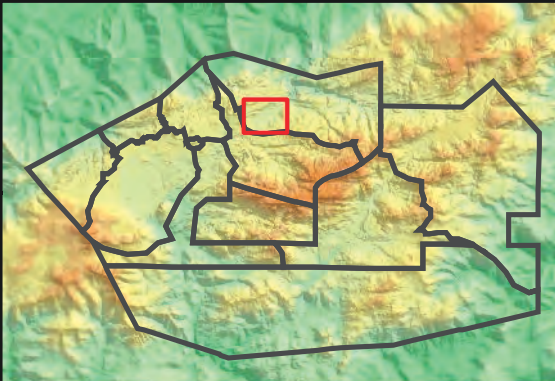
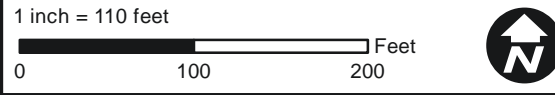
# Outfall 009 BMP and Performance Monitoring Locations AP/STP Area

- Base Map Legend**
- Administrative Area Boundary
  - Non Jurisdictional Surface Water Pathway
  - RF1 Site Boundary
  - Surface Water Divide
  - Drainage
- Figure Legend**
- Primary Downstream Performance Monitoring Location
  - Upstream Performance Monitoring Location
  - Secondary Performance Monitoring Location
  - Discontinued Performance Monitoring Location
  - Potential BMP Subarea Monitoring Location
  - Discontinued Potential BMP Subarea Monitoring Location
  - ISRA Excavation Boundary
  - Planned ISRA Area Boundary
  - ISRA Areas with remediation/restoration in progress

**Note:**

1. Aerial imagery from 2010 Sage Consulting.
2. Topographic contours from 2010 Sage Consulting.
3. Rationale for discontinuing monitoring at previous sample locations can be found in the text and/or tables of the 2012/2013 Rainy Season Sampling and Analysis Plan.
4. Inspection/sampling at offsite monitoring locations subject to property owner approval.

Path: T:\projects\rock3\ISRA\Figures\PerfMon\2012-2013 Rainy Season\APSTP\_Fig-2-6.mxd Date: 8/11/2013

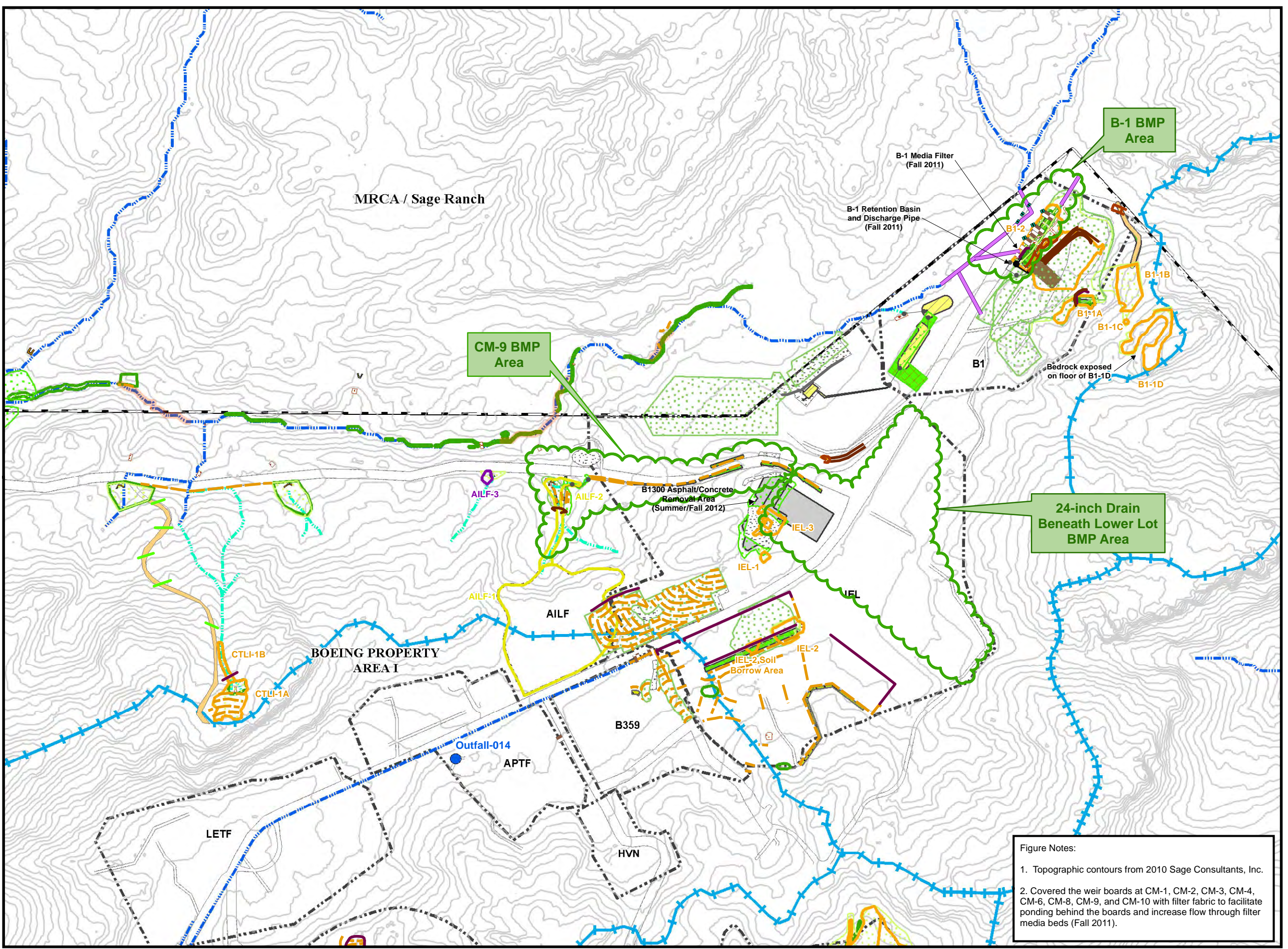
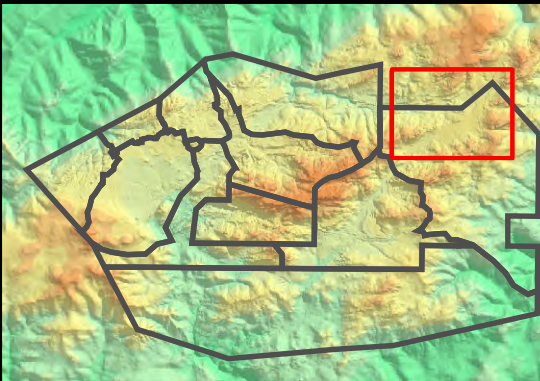
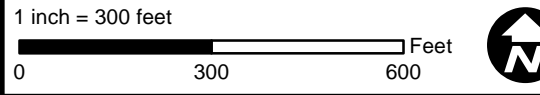


# BMP Installations 2010-2013 Eastern Outfall 009 Watershed

- Base Map Legend**
- Administrative Area Boundary
  - RFI Site Boundary
  - NPDES Outfall
  - Non Jurisdictional Surface Water Pathway
  - Drainage
  - Surface Water Divide
  - A/C Paving
  - Dirt Road
  - Elevation Contour

- Data Legend**
- Actual ISRA Excavation Boundary
  - ISRA Area with Remediation in Progress
  - Planned ISRA Area Excavation
  - Former Planned ISRA Excavation Area
  - Culvert Maintenance (CM)
  - Media Filters
  - Retention Basin
  - Engineered Natural Treatment System
  - Abandoned Road
  - Demolition Area
  - Erosion Control Fabric
  - Jute Straw Mat
  - Rip Rap
  - Gravel
  - Planting Area
  - Hydeseed 2012/2013
  - Hydeseed 2011/2012
  - Hydeseed 2010/2011
  - Concrete Curb
  - Conveyance Pipeline
  - Curb Cut
  - Check Dam
  - Gabion
  - Fiber Rolls
  - Hay Straw Bales
  - Silt Fencing
  - Sandbags
  - Soil Berm
  - Water Gravel Bars
  - Wooden Retaining Wall
  - Culvert Maintenance Headwall
  - Planned BMP Activities
  - Northern Drainage RMMP Areas (Summer/Fall 2012)
  - B-1 Area Stormwater Conveyance Pipelines (estimated subsurface trace)
  - Trench Drain/Cistern
  - BMP Area (Planned)

Path: T:\projects\rock3\ISRA\Figures\Outfall-009\BMP-009\_2013\Figure 3-1.mxd  
Date: 8/15/2013



**Figure Notes:**

1. Topographic contours from 2010 Sage Consultants, Inc.
2. Covered the weir boards at CM-1, CM-2, CM-3, CM-4, CM-6, CM-8, CM-9, and CM-10 with filter fabric to facilitate ponding behind the boards and increase flow through filter media beds (Fall 2011).



SANTA SUSANA FIELD LABORATORY

FIGURE 3-1

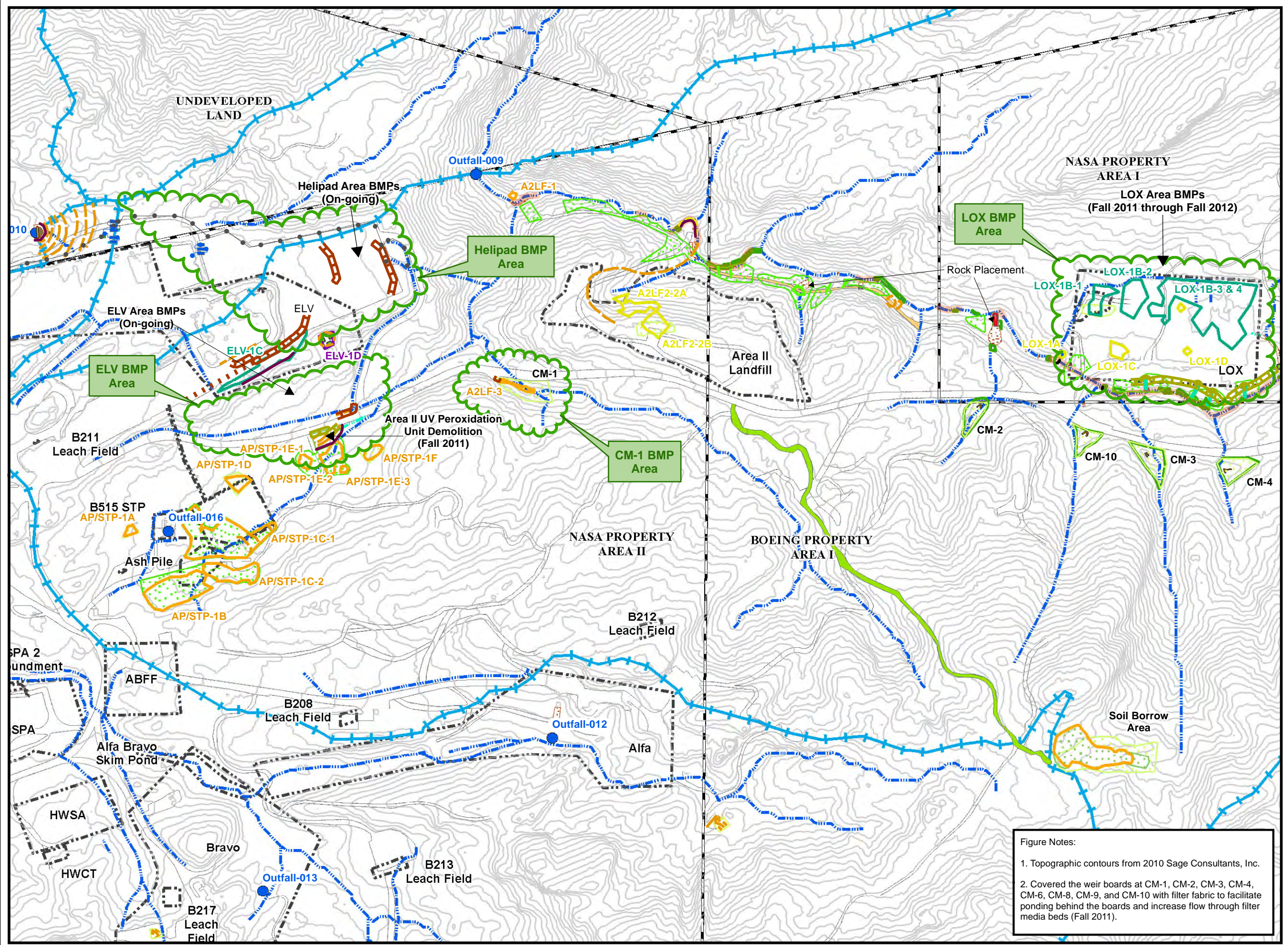
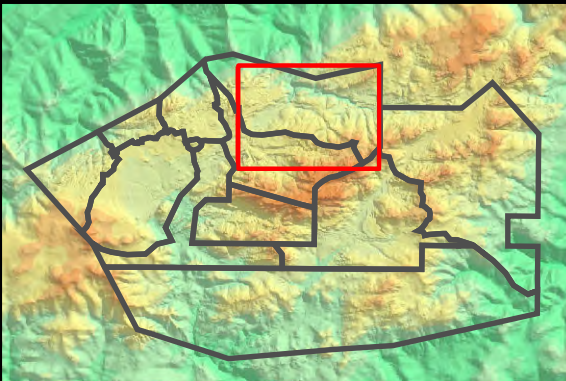
# BMP Installations 2010-2013 Western Outfall 009 Watershed

- Base Map Legend**
- Administrative Area Boundary
  - RFI Site Boundary
  - NPDES Outfall
  - Drainage
  - Non Jurisdictional Surface Water Pathway
  - Surface Water Divide
  - A/C Paving
  - Dirt Road
  - Elevation Contour

- Data Legend**
- Actual ISRA Excavation Boundary
  - ISRA Area with Remediation in Progress
  - Planned ISRA Area Excavation
  - Former Planned ISRA Excavation Area
  - Culvert Maintenance (CM)
  - Media Filters
  - Retention Basin
  - Abandoned Road
  - Erosion Control Fabric
  - Rip Rap
  - Geo Cell
  - Planting Area
  - Pump
  - Storage Tank
  - Road Erosion Control Measures
  - Runoff Low Spot
  - Hydroseed 2012/2013
  - Hydroseed 2011/2012
  - Hydroseed 2010/2011
  - Conveyance Pipeline
  - Fiber Rolls
  - Hay Straw Bales
  - Silt Fencing
  - Gravel Bag Berm
  - Sandbags
  - Rolling Dips
  - Slope Drain
  - Water Gravel Bars
  - Pipeline
  - Storm Drain Headwall
  - Northern Drainage RMMP (Summer 2012)
  - BMP Area (Planned)

Path: T:\projects\rock3\ISRA\Figures\Outfall-009\BMP-009\_2013\Figure 3-2.mxd Date: 8/15/2013

1 inch = 350 feet



**Figure Notes:**

- Topographic contours from 2010 Sage Consultants, Inc.
- Covered the weir boards at CM-1, CM-2, CM-3, CM-4, CM-6, CM-8, CM-9, and CM-10 with filter fabric to facilitate ponding behind the boards and increase flow through filter media beds (Fall 2011).



SANTA SUSANA FIELD LABORATORY

FIGURE 3-2