

SITE VOLUMES (Cubic Yards)

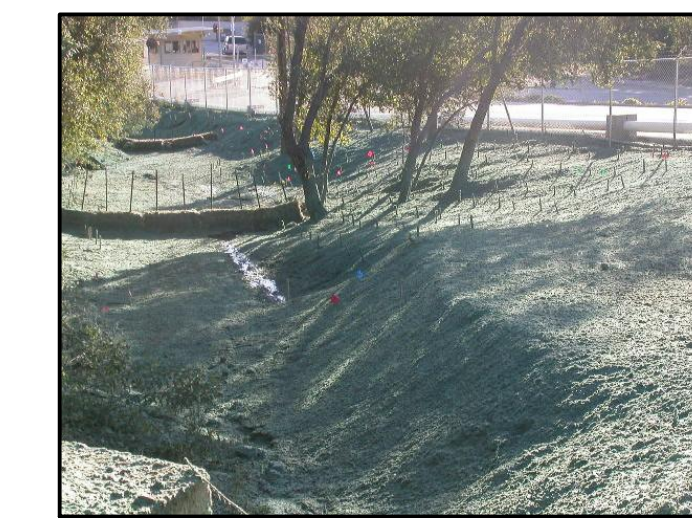
Site	Stratum Surf1	Surf2	Site Volume Table: Unadjusted	Fill	Net	Method
B2-ASBUILT	b2 post-ex asbuilt topo		Cut			
			1988	1909	80 (C)	Grid
			2227	2157	70 (C)	Composite
			2250	2153	96 (C)	End area

LEGEND

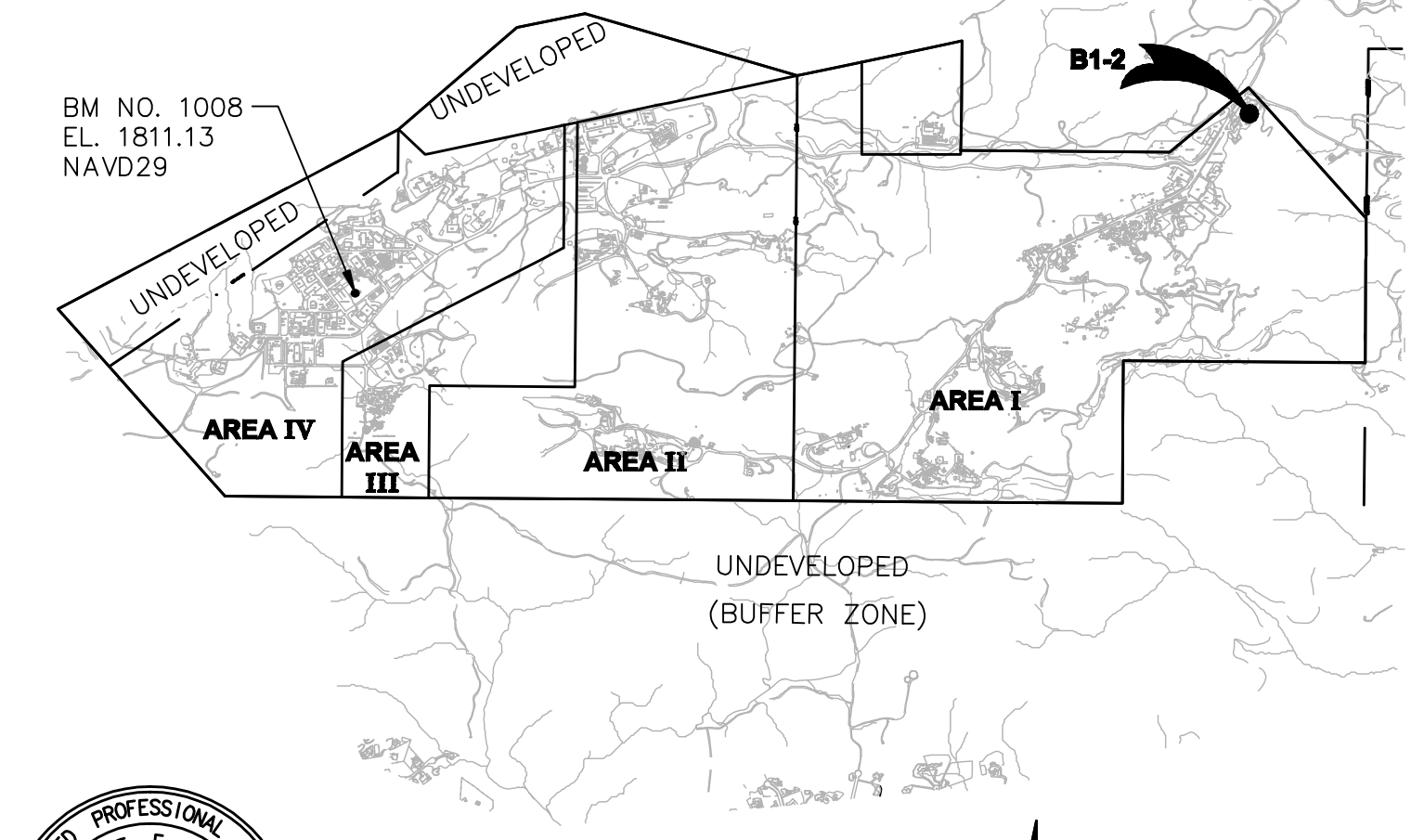
- 5' CONTOURS (MAY 2011)
- 1' CONTOURS (MAY 2011)
- ROCK FORMATION
- AREA LIMITS
- BERM LINE
- DRIP TREE LINE
- AC CURB
- CHAIN LINK FENCE
- 10" WATER LINE
- RS-32 MONITORING WELL
- PZ-116 PIEZOMETER WELL
- SPOT ELEVATION
- FLOWLINE ELEVATION
- PHOTO VIEWPOINT
- PCC RIBBON
- 12" PIPE
- PROTECTED SPECIES
- CMP CORRUGATED METAL PIPE
- CLF CHAIN LINK FENCE



VIEW 6
LOOKING NORTHEAST



VIEW 7
LOOKING SOUTHWEST



LOCATION MAP
(NO SCALE)



VIEW 1
LOOKING SOUTH



VIEW 2
LOOKING SOUTHEAST



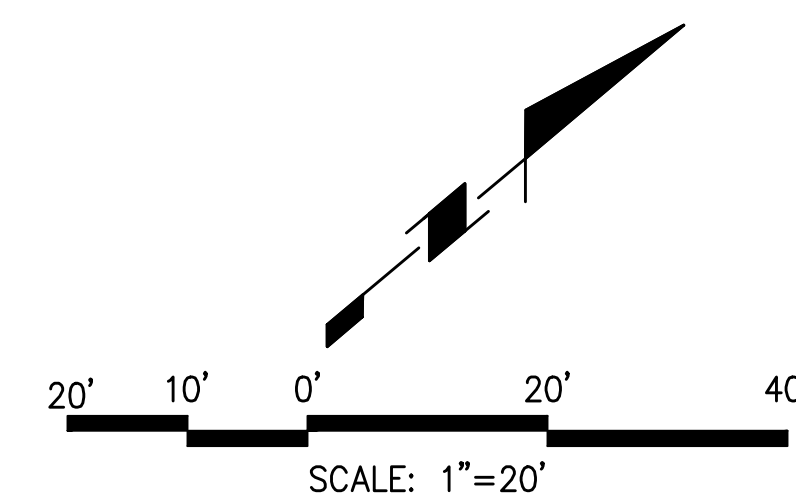
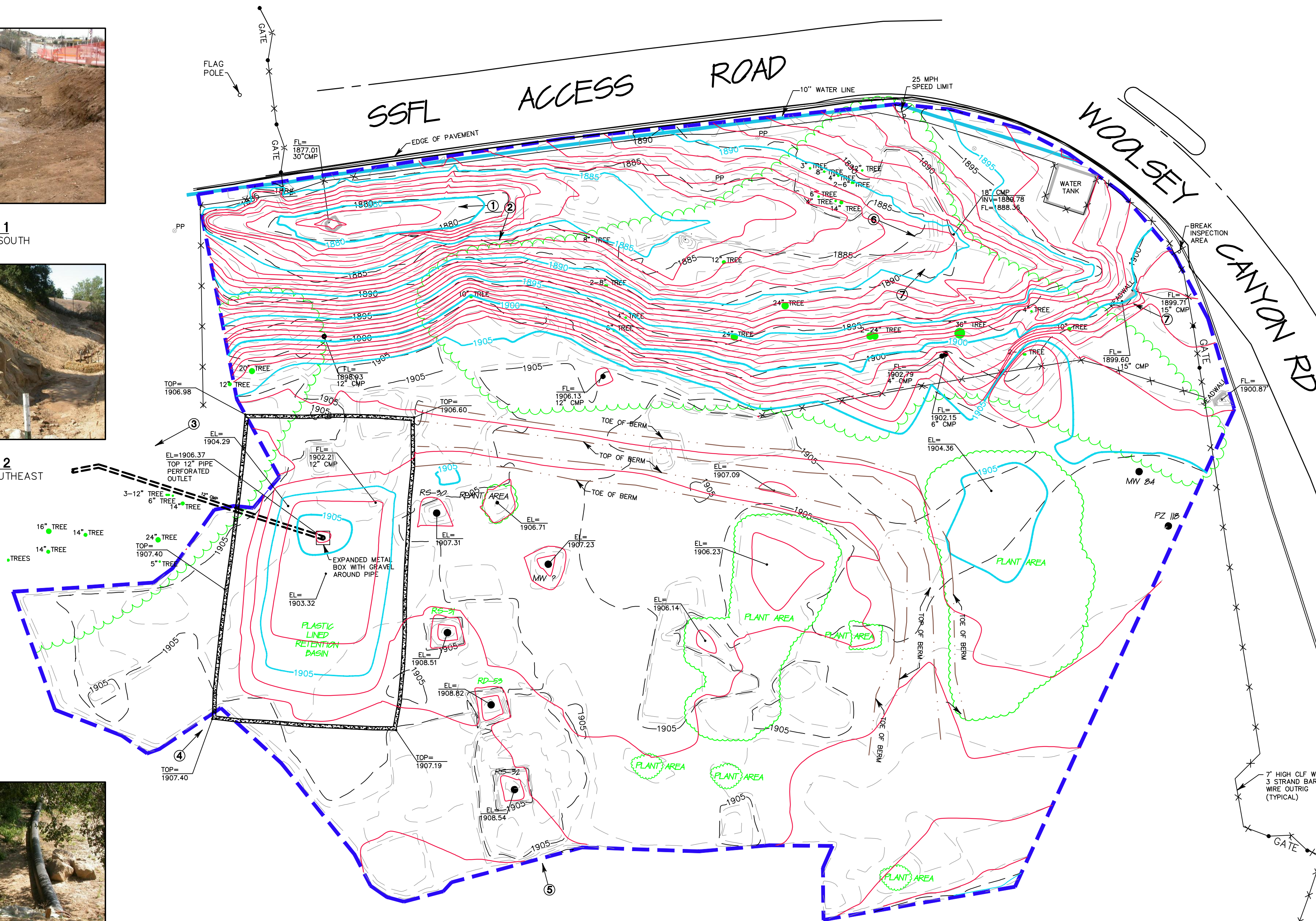
VIEW 3
LOOKING SOUTH



VIEW 4
LOOKING NORTH



VIEW 5
LOOKING NORTHWEST



NOTES

- BENCH MARK:
FOUND BRASS DISK STAMPED "N 22688.45 E 12152.65 ELEV 1813.75 LS 2957" SET IN TOP WEST EDGE OF ROCK OUTCROPPING LOCATED IN VACANT FIELD NORTH OF ASPHALT DRIVE NORTH OF BUILDING 110.
- COORDINATES DERIVED FROM BOEING 1992 TOPOGRAPHIC MAP (NAD27 NAVD29 FEET):
N 266917.4900
E 1785312.1200
ELEV 1811.13
- PURPOSE: THE PURPOSE OF THIS DRAWING IS TO SHOW THE B1-2 ISRA AS OF MAY 2011.
- NOTES: 1. AS BUILT SURFACE SURVEYED MAY 6, 2011.
2. SITE REPORT VOLUMES CALCULATED USING AUTODESK LAND DESKTOP SOFTWARE.
3. MONITORING WELL DATA RE-SURVEYED DECEMBER 10, 2010.



ROBERT E. LITTELL RCE 13395

REVISED: 05-12-2011 (REVISED WITH EXISTING ELEVATIONS, UPDATED CONTOURS)

SAGE CONSULTANTS INC. BOEING SSFL ISRA B1-2, AREA I WELLS SHEET 1 of 1
JO: 494-V-1989 5800 WOOLSEY CANYON ROAD, CANOGA PARK, CA Date: 12/09/2010

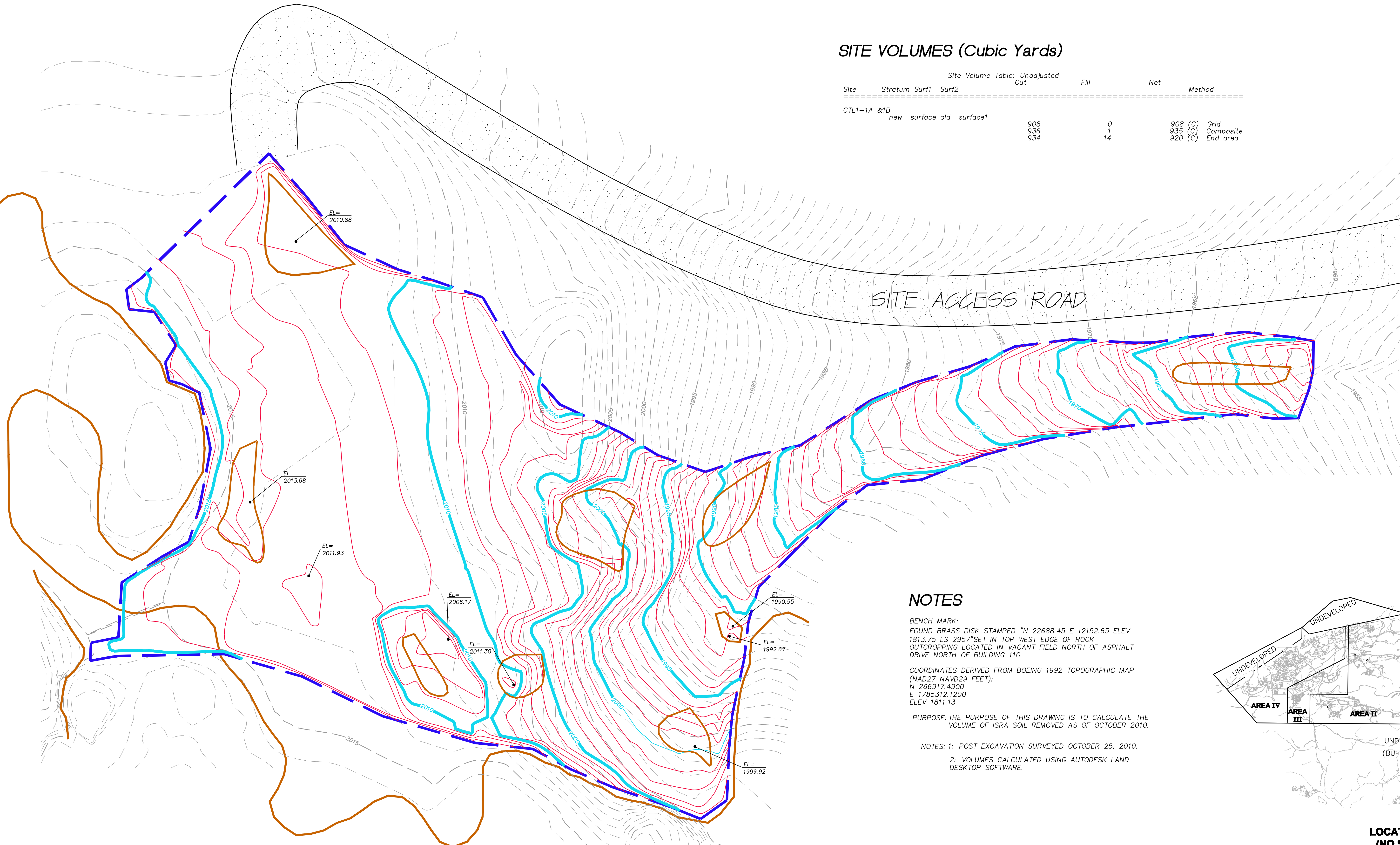
Point ID	North Latitude *	West Longitude *	NAVD 88***	Northing**	Easting**	Surface Casing****	Well Head****	Ground****
5	34-13-52.96029	118-42-40.25009	1813.81	266917.4900	1785312.1200		BM	1811.13
RS-32	34-14-16.24314	118-40-22.14082	1912.29	269191.3460	1796923.5331	1910.02	1909.65	1908.54
RD-53	34-14-16.35484	118-40-22.41200	1911.46	269202.7891	1796900.8423	1909.82	1908.82	1908.82
RS-31	34-14-16.28280	118-40-22.71269	1912.29	269205.8851	1796875.6183	1909.92	1909.65	1908.51
RS-30	34-14-16.59015	118-40-23.06922	1912.18	269226.9444	1796845.8256	1909.75	1909.54	1907.31
?	34-14-16.74106	118-40-22.67348	1909.15	269241.9771	1796879.1521	1907.24	1906.51	1907.23
PZ-118	34-14-18.20730	118-40-21.37878	1910.51	269389.4660	1796988.8398	1908.19	1907.87	1905.62
RD-84	34-14-18.14251	118-40-21.59361	1910.47	269393.1458	1796970.8277	1908.41	1907.83	1905.37

* degrees, minutes, seconds; NAD 83
** SPC, CA Zone 5, Survey Feet, NAD 27
*** NAVD 88: north side surface casing
****NAVD 29; north side

 SAGE consultants, Inc. LAT 34°-13'-00" N LONG 118°-02'-40" W ELEV 55.458m Surveyors • Application Developers • GIS Integrators • Engineers 1978 Ventura Blvd., CAMARILLO CA 93010-7847 Tel. (805) 482-6088 • Fax (805) 389-9815 www.sagecon.com	BOEING SSFL ISRA AREA B1-2 AS BUILT EXHIBIT WAS 4506	SHEET 1 OF 1
	SCALE: 1"=20' DATE: 3-04-2011	

SITE VOLUMES (Cubic Yards)

Site	Stratum		Surface		Cut	Fill	Net	Method
	Surf1	Surf2	new	old				
CTL1-1A & 1B					908	0	908 (C)	Grid
					936	1	935 (C)	Composite
					934	14	920 (C)	End area



SITE ACCESS ROAD

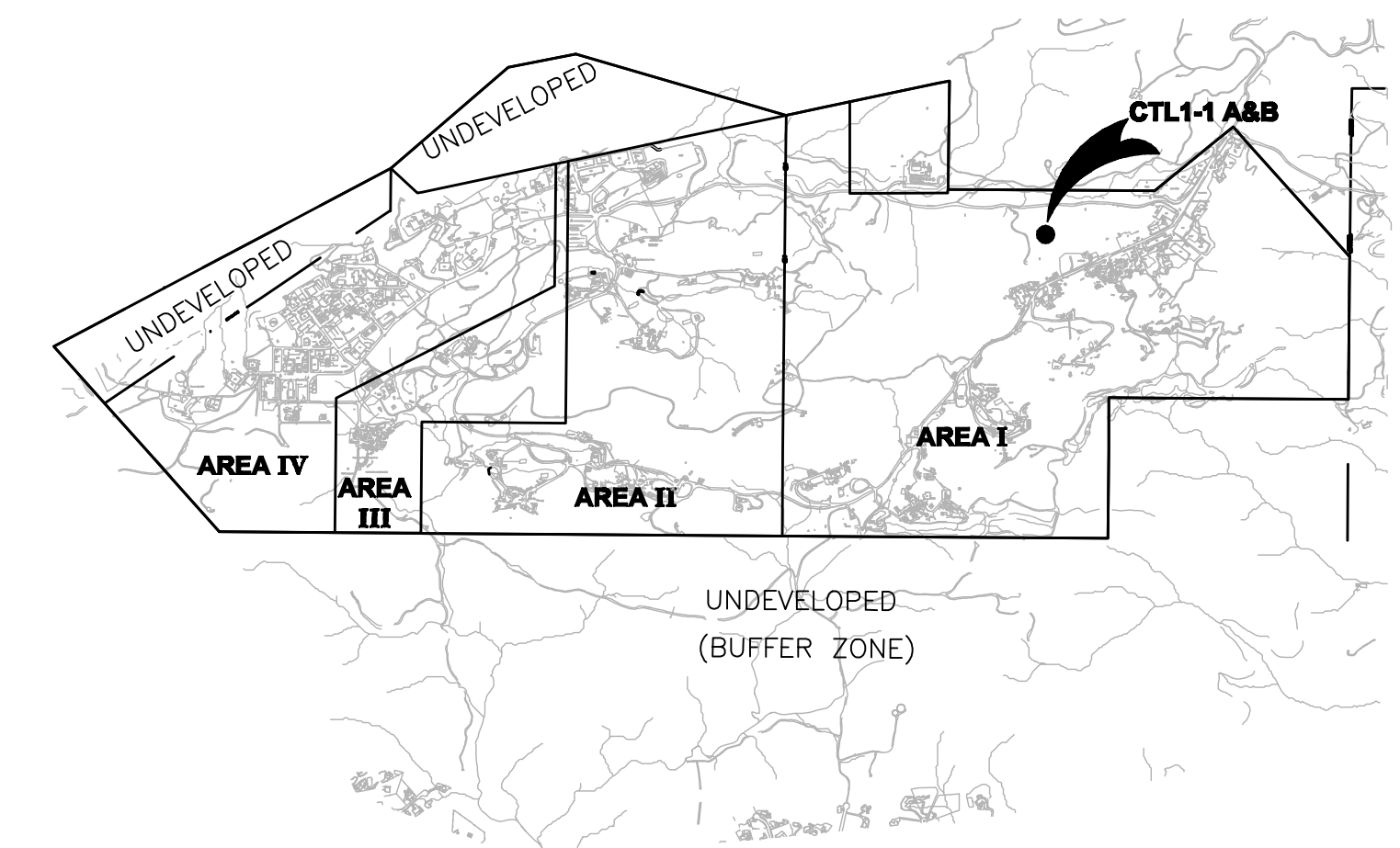
NOTES

BENCH MARK:
 FOUND BRASS DISK STAMPED "N 22688.45 E 12152.65 ELEV 1813.75 LS 2957" SET IN TOP WEST EDGE OF ROCK OUTCROPPING LOCATED IN VACANT FIELD NORTH OF ASPHALT DRIVE NORTH OF BUILDING 110.

COORDINATES DERIVED FROM BOEING 1992 TOPOGRAPHIC MAP (NAD27 NAVD29 FEET):
 N 266917.4900
 E 1785312.1200
 ELEV 1811.13

PURPOSE: THE PURPOSE OF THIS DRAWING IS TO CALCULATE THE VOLUME OF ISRA SOIL REMOVED AS OF OCTOBER 2010.

NOTES: 1: POST EXCAVATION SURVEYED OCTOBER 25, 2010.
 2: VOLUMES CALCULATED USING AUTODESK LAND DESKTOP SOFTWARE.



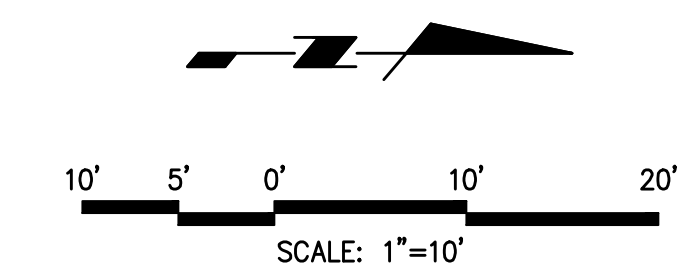
LOCATION MAP (NO SCALE)

LEGEND

- 1920 5' CONTOURS (OCTOBER 2010)
- 1' CONTOURS (OCTOBER 2010)
- ROCK FORMATION
- 1500 5' CONTOURS (JUNE 2010)
- 1' CONTOURS (JUNE 2010)
- - - EXCAVATION LIMITS
- DIRT ROAD

REVISED: 02-24-2011 (MODIFIED CONTOURS)

Robert E. Littell
 ROBERT E. LITTELL RCE 13395



SAGE Consultants, Inc.
 LAT 34°-13'-00" N LONG 119°-02'-40" W ELEV 55.438m
 Surveyors • Application Developers • GIS Integrators • Engineers
 1978 Ventura Blvd., CAMARILLO CA 93010-7847
 Tel. (805) 482-6088 • Fax (805) 389-9615
 www.sagecon.com

BOEING SSFL
 CTL1-1A & 1B
 POST EXCAVATION EXHIBIT

SHEET
 1
 OF 1

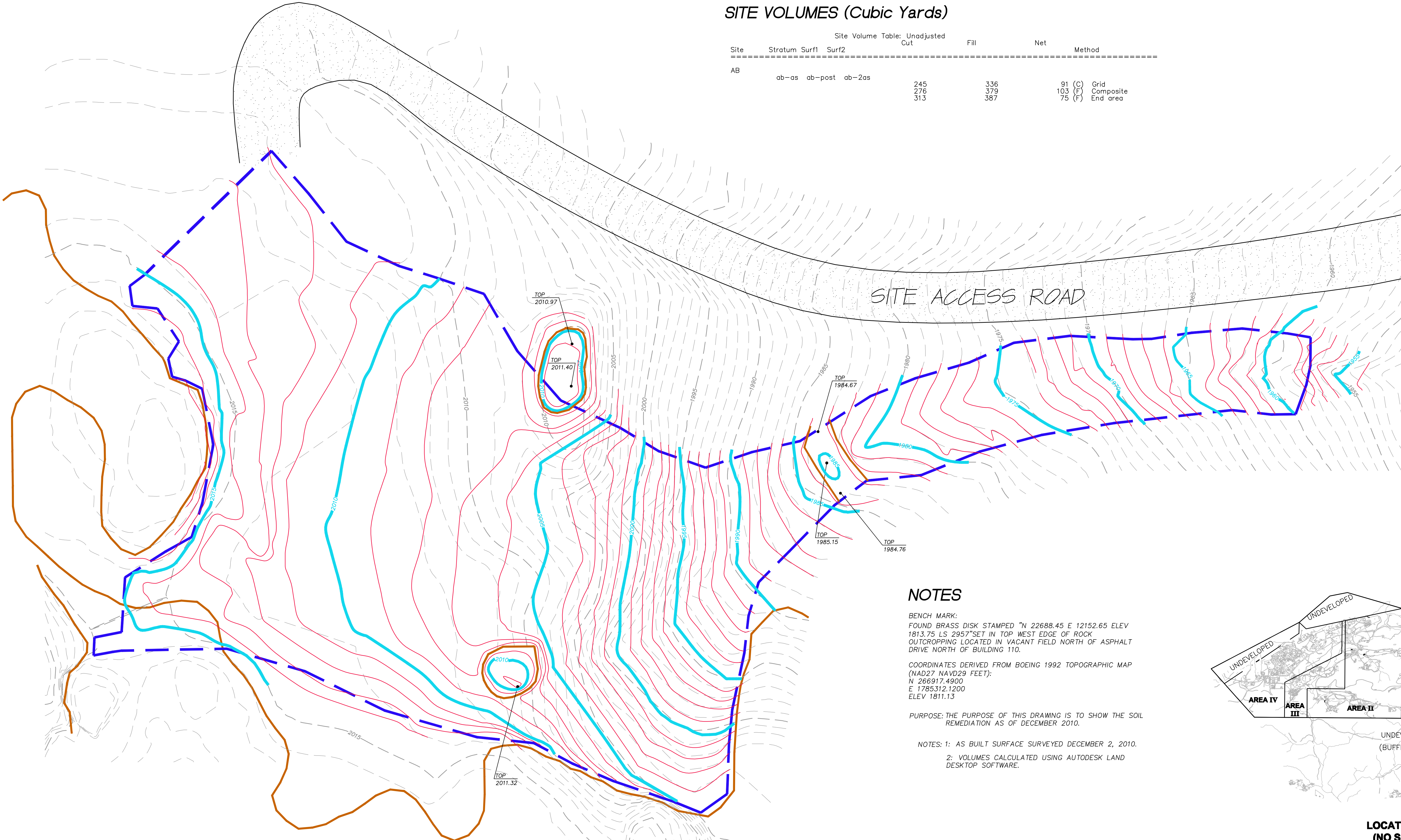
SCALE: 1"=10'
 DATE: 10-27-2010

5800 WOOLSEY CANYON ROAD
 CANOGA PARK, CA 91304-1148
 COUNTY OF VENTURA STATE OF CALIFORNIA

JOB NUMBER: 494-V-1985
 DWG NAME: CTL1-1AB

SITE VOLUMES (Cubic Yards)

Site	Site Volume Table: Unadjusted			Fill	Net	Method
	Stratum	Surf1	Surf2			
AB	ab-as	ab-post	ab-2as	245	336	91 (C) Grid
				276	379	103 (F) Composite
				313	387	75 (F) End area



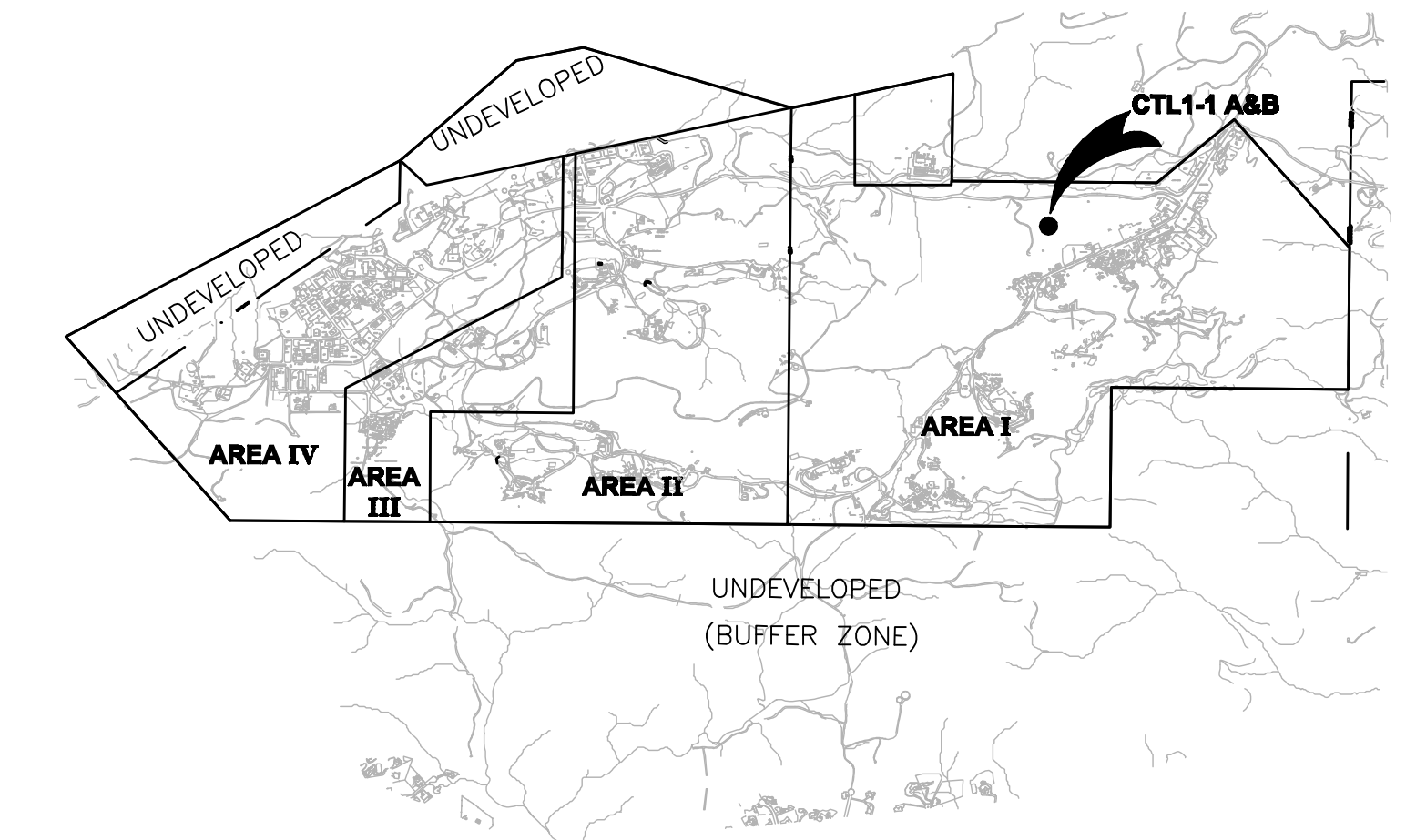
NOTES

BENCH MARK:
 FOUND BRASS DISK STAMPED "N 22688.45 E 12152.65 ELEV 1813.75 LS 2957" SET IN TOP WEST EDGE OF ROCK OUTCROPPING LOCATED IN VACANT FIELD NORTH OF ASPHALT DRIVE NORTH OF BUILDING 110.

COORDINATES DERIVED FROM BOEING 1992 TOPOGRAPHIC MAP (NAD27 NAVD29 FEET):
 N 266917.4900
 E 1785312.1200
 ELEV 1811.13

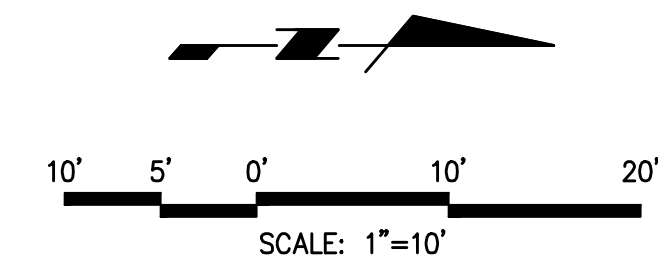
PURPOSE: THE PURPOSE OF THIS DRAWING IS TO SHOW THE SOIL REMEDIATION AS OF DECEMBER 2010.

NOTES: 1: AS BUILT SURFACE SURVEYED DECEMBER 2, 2010.
 2: VOLUMES CALCULATED USING AUTODESK LAND DESKTOP SOFTWARE.



LEGEND

- 1920 5' CONTOURS (DECEMBER 2010)
- 1' CONTOURS (DECEMBER 2010)
- ROCK FORMATION
- 1500 5' CONTOURS (JUNE 2010)
- 1' CONTOURS (JUNE 2010)
- - - EXCAVATION LIMITS
- DIRT ROAD



Robert E. Littell
 ROBERT E. LITTELL RCE 13395

REVISED: 02-23-2011 (MODIFIED CONTOURS)

 SAGE consultants, Inc. LAT 34°13'00" N LONG 119°02'40" W ELEV 55.438m Surveying • Application Development • GIS Integration • Engineering 1978 Ventura Blvd., CAMARILLO CA 93010-7847 Tel. (805) 482-6088 • Fax (805) 389-9815 www.sagecon.com	BOEING SSFL CTL1-1A & 1B AS-BUILT EXHIBIT	SHEET 1 OF 1
	SCALE: 1"=10' DATE: 12-8-2010	

5800 WOOLSEY CANYON ROAD
 CANOGA PARK, CA 91304-1148
 COUNTY OF VENTURA STATE OF CALIFORNIA