

The Boeing Company  
Santa Susana Field Laboratory  
5800 Woolsey Canyon Road  
Canoga Park, CA 91304-1148

Certified Mail

March 30, 2010  
In reply refer to SHEA-109756

Regional Water Quality Control Board  
Los Angeles Region  
320 West 4<sup>th</sup> Street, Suite 200  
Los Angeles, CA 90013

Attention: Mr. Peter Raftery

Subject: March 31, 2010 Quarterly Progress Report for December 19, 2009  
through March 12, 2010 Activity  
Final Interim Source Removal Action (ISRA) Work Plan Submitted in  
Response to California Water Code Section 13304 Order (NPDES  
NO. CA0001309, CI NO. 6027, SCP NO. 1111, SITE ID NO.  
2040109)

Dear Mr. Raftery:

In the Final ISRA Work Plan, Boeing and NASA proposed to provide the Los Angeles Regional Water Quality Control Board (RWQCB) with quarterly progress reports until construction field work is complete (targeted Fall/Winter 2011). This Quarterly Progress Report is submitted for the first quarter 2010. This report summarizes ISRA activities performed during the period of December 19, 2009 through March 12, 2010.

ISRA activities at the SSFL are being performed pursuant to a California Water Code Section 13304 Cleanup and Abatement Order (CAO) issued by RWQCB dated December 3, 2008. The CAO was issued by the RWQCB in order to achieve compliance with the Waste Discharge Requirements (WDR) for Outfalls 008 and 009 contained in Order No. R4 2004-0111, as amended by Orders No. R4-2006-0008, R4 2006 0036, and R4 2007-0055. The CAO requires the sources that are discharging the constituents that exceeded National Pollution Discharge Elimination System (NPDES) permit limits and benchmarks within the Outfall 008 and 009 watersheds to be addressed. Per the RWQCB CAO, a Preliminary ISRA Work Plan was prepared and submitted to the RWQCB on February 13, 2009 and a Final ISRA Work Plan was prepared and submitted to the RWQCB on May 1, 2009. The Final ISRA Work Plan supplements the Preliminary ISRA Work Plan by completing the ISRA Area identification and remedial planning process for the Outfall 008 watershed and one area in the Outfall 009 watershed, and describes procedures to complete ISRA remedial planning for the remainder of the Outfall 009 watershed.

Per the RWQCB's request, Boeing is providing monthly progress reports on the ISRA activities. This quarterly progress report is a compilation of the monthly



March 30, 2010  
In Reply refer to SHEA-109756  
Page 2

progress reports for the period of December 19, 2009 through March 12, 2010. The monthly progress reports are attached to this quarterly progress report and provide the complete list of ISRA activities performed during the period covered by this quarterly report.



In addition, performance monitoring inspections and surface water sampling were conducted during rain events in the fourth quarter 2009 and first quarter 2010, per the Performance Monitoring Plan that was approved by RWQCB on February 3, 2010. Rain events occurred on the following dates, with performance monitoring samples collected as indicated:

- December 7, 2009 – 1.12 inches of rain, 4 samples collected (3 on hold);
- December 10-13, 2009 – 2.31 inches of rain, 4 samples collected (1 on hold);
- January 17-23, 2010 – 6.89 inches of rain; 23 samples collected (8 on hold);
- February 5-9, 2010 – 2.04 inches of rain; 19 samples collected (4 on hold) and 10 RWQCB split samples collected;
- February 19-27, 2010 – 1.81 inches of rain, 17 samples collected (2 on hold) and 17 RWQCB splits samples collected; and
- March 6, 2010 – 0.38 inches of rain, 9 samples collected (none on hold).

Data for these sampling events will be summarized and discussed in the second quarter 2010 ISRA Quarterly Progress Report that will be submitted to RWQCB on June 30, 2010, once all the sample data have been received for the 2009-2010 rainy season.

If you have any questions or require anything further, please contact Lori Blair at 818-466-8741.

Sincerely,

A handwritten signature in black ink, appearing to read "Tom Gallacher", with a long horizontal line extending to the left.

Tom Gallacher  
Director  
Santa Susana Field Laboratory  
Environment, Health, and Safety

Attachments:

- January 2010 Monthly Progress Report (December 19, 2009 – January 15, 2010)
- February 2010 Monthly Progress Report (January 15 – February 12, 2010)
- March 2010 Monthly Progress Report (February 8 – March 12, 2009)

March 30, 2010  
In Reply refer to SHEA-109756  
Page 3

cc: Ms. Cassandra Owens, RWQCB  
Mr. Allen Elliott, NASA,  
Mr. Steve Slaten, NASA,  
Mr. Rick Lainhart, U.S. ACOE  
Mr. Buck King, DTSC  
Mr. Mark Malinowski, DTSC







Date: 1/18/2010 No.: SHEA-109522

To: Tracy Egoscue  
Executive Office  
LA Regional Water Quality Control  
Board

From: Tom Gallacher  
Director, Santa Susana Field Laboratory  
Environmental, Health & Safety

Subject: February 2010 Monthly Progress Report for December 19, 2009 - January 15, 2010 Activity  
California Water Code Section 13304 Interim Source Removal Action Order (ISRA)  
(NPDES No. CA0001309, CI No. 6027, SCP NO. 1111, Site ID No. 2040109)

Per the Regional Water Board's Request, Boeing is providing the following Monthly Progress Report on the Interim Source Removal Action (ISRA) activities for the period of December 19, 2009 to January 15, 2010. In addition, a 30 day Look-Ahead is also provided.

Weekly team meetings have been held to track the ISRA activities since April 15, 2009. The meeting participants consist of RWQCB staff, DTSC staff, Ventura County staff, Surface Water Expert Panel Members, Boeing, and NASA. For the period from mid-December to mid-January, the primary activities have been preparation for additional data gap and source delineation sampling to support development of the 2010 Work Plan Addendum, and Performance Monitoring Plan review by the Surface Water Expert Panel, finalization, and submittal to RWQCB and DTSC. In addition, inspections of BMPs at Outfall 008 and 009 ISRA excavation areas have been conducted weekly since the onset of the rainy season, per the ISRA SWPPP.

#### **Completed Tasks – December 19, 2009 to January 15, 2010**

- December 18, 2009 – Conducted aerial topographic survey of Outfall 008 re-contoured excavations.
- December 21-23, 2009 – Demobilized equipment from 2009 ISRA excavation areas.
- January 4-14, 2010 – Planned additional data gap and source delineation sampling within Outfall 009 to identify 2010 ISRA areas.
- January 8, 2010 – Finalized Performance Monitoring Plan for surface water sampling at Outfalls 008 and 009, including Surface Water Expert Panel review, and submitted to RWQCB and DTSC.

#### **30-Day Look ahead – through February 15, 2010**

- Boeing – Install irrigation systems for planted Natural BMPs at Outfall 008.
- Boeing / NASA – Conduct additional data gap and source delineation sampling in Outfall 009 to support preparation of 2010 Work Plan Addendum.



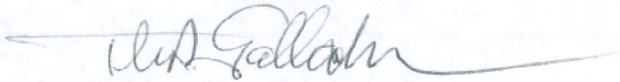
Ms. T. Egoscue, RWQCB (SHEA-109522)

January 18, 2010

Page 2

- Boeing / NASA – Begin preparing Work Plan Addendum for 2010 ISRA implementation.
- Boeing / NASA – Begin preparing 2009 ISRA Implementation Summary Report.
- Boeing – Complete Ventura County Grading permit close-out requirements and conduct site visit with Ventura County inspectors.
- Boeing – Per the Surface Water Expert Panel recommendations, install containerized plants at Outfall 008 (near HVS-2) and at Outfall 009 culvert locations, and install water supply system to the planted areas.
- Expert Panel – Recommend plant source (seed / commercial) for 2010 ISRA restoration activities.
- RWQCB– Review and provide approval for Performance Monitoring Plan for surface water sampling at Outfalls 008 and 009.
- Boeing/NASA – Review permitting requirements for the 2010 ISRA implementation field work.
- Surface Water Expert Panel – Prepare a schedule for the development of the 2010 ISRA field work restoration plan recommendations.
- Boeing – Inspect all ISRA areas during rain events. Obtain performance monitoring samples per Performance Monitoring Plan.

Approved By:



Thomas D. Gallacher  
Director, Santa Susana Field Laboratory  
Environment, Health and Safety

LNB:bjc

Distribution:

Peter Raftery, RWQCB  
Cassandra Owens, RWQCB  
Buck King, DTSC  
Allen Elliott, NASA  
Steven Slaten, NASA





The Boeing Company

5800 Woolsey Canyon Road  
Canoga Park, CA 91304-1148

Date: 2/15/2010 No.: SHEA-109613  
To: Tracy Egoscue From: Tom Gallacher  
Executive Office Director, Santa Susana Field Laboratory  
LA Regional Water Quality Control Environment, Health & Safety  
Board  
Subject: March 2010 Monthly Progress Report for January 15, 2010 - February 12, 2010 Activity  
California Water Code Section 13304 Interim Source Removal Action Order (ISRA)  
(NPDES No. CA0001309, CI No. 6027, SCP NO. 1111, Site ID No. 2040109)

Per the Regional Water Board's request, Boeing is providing the following Monthly Progress Report on the Interim Source Removal Action (ISRA) activities for the period of January 15, 2010 to February 12, 2010. In addition, a 30 day Look-Ahead is also provided.

Weekly team meetings have been held to track the ISRA activities since April 15, 2009. During this reporting period, the meeting participants have consisted of RWQCB staff, DTSC staff, Surface Water Expert Panel Members, Boeing, and NASA. For the period from mid-January to mid-February, the primary activities have been preparing the Phase I (2009) ISRA Implementation Summary Report, performing additional data gap and source delineation sampling to support development of the 2010 Work Plan Addendum, and performing Performance Monitoring inspections and sampling during rain events. In addition, inspections of BMPs at Outfall 008 and 009 ISRA excavation areas have been conducted weekly since the onset of the rainy season, per the ISRA SWPPP.

**Completed Tasks – January 15, 2010 to February 12, 2010**

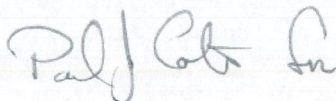
- January 15, 2010 – Completed culvert maintenance installation work at A2LF-3.
- January 18 - 22, 2010 – Conducted Performance Monitoring inspections and surface water sampling during rain events, per the Performance Monitoring Plan. RWQCB collected split samples during February 5-6, 2010 rain event.
- January 25 - February 9, 2010 – Conducted additional data gap and source delineation sampling in Outfall 009 (Boeing property) to support preparation of 2010 Work Plan Addendum.
- February 1 - 12, 2010 – Installed containerized plants at Outfall 008 (near HVS-2A) and at Outfall 009 culvert locations, per the Surface Water Expert Panel recommendations.
- February 3, 2010 – Received RWQCB approval on the Performance Monitoring Plan.
- February 5 - 6, 2010 – Conducted Performance Monitoring inspections and surface water sampling during rain events, per the Performance Monitoring Plan; RWQCB collected split samples.



**30-Day Look ahead – through March 12, 2010**

- Boeing – Install irrigation systems for planted Natural BMPs at Outfall 008.
- NASA – Conduct additional data gap and source delineation sampling in Outfall 009 to support preparation of 2010 Work Plan Addendum.
- Boeing / NASA – Begin preparing Work Plan Addendum for 2010 ISRA implementation.
- Boeing / NASA – Continue preparing the Phase I (2009) ISRA Implementation Summary Report.
- Boeing – Complete Ventura County Grading permit close-out requirements and conduct site visit with Ventura County inspectors.
- Boeing – Per the Surface Water Expert Panel recommendations, install a water supply system to the planted areas at Outfall 008 (near HVS-2) and at Outfall 009 culvert locations.
- Expert Panel – Recommend plant source (seed / commercial) for 2010 ISRA restoration activities.
- Boeing / NASA – Continue reviewing permitting requirements for the 2010 ISRA implementation field work.
- Boeing / NASA – Begin preparing Biological Report for the 2010 ISRA implementation areas.
- Surface Water Expert Panel – Prepare a schedule for the development of the 2010 ISRA field work restoration plan recommendations.
- Boeing – Continue inspecting all ISRA areas during rain events per the SWPPP and obtain performance monitoring samples per the Performance Monitoring Plan.

Approved By:



Thomas D. Gallacher  
Director, Santa Susana  
Environment, Health and Safety

Distribution:

Peter Raftery, RWQCB  
Cassandra Owens, RWQCB  
Buck King, DTSC  
Allen Elliott, NASA  
Steven Slaten, NASA





Date: 3/15/2010 No.: SHEA-109713

To: Tracy Egoscue  
Executive Office  
Regional Water Quality Control Board  
LA Region

From: Tom Gallacher  
Director, Santa Susana Field Lab  
Environmental, Health & Safety

Subject: March 2010 Monthly Progress Report for February 8, 2010 - March 12, 2010 Activity  
California Water Code Section 13304 Interim Source Removal Action Order (ISRA)  
(NPDES No. CA0001309, CI No. 6027, SCP NO. 1111, Site ID No. 2040109)

Per the Regional Water Board's request, Boeing is providing the following Monthly Progress Report on the Interim Source Removal Action (ISRA) activities for the period of February 8, 2010 to March 12, 2010. In addition, a 30 day Look-Ahead is also provided.

Weekly team meetings have been held to track the ISRA activities since April 15, 2009. During this reporting period, the meeting participants have consisted of RWQCB staff, DTSC staff, Surface Water Expert Panel Members, Boeing, and NASA. For the period from mid-February to mid-March, the primary activities have been completing Ventura County 2009 grading permit close-out requirements, preparing the Phase I (2009) ISRA Implementation Summary Report, performing additional data gap and source delineation sampling to support development of the 2010 ISRA Work Plan Addendum, and conducting Performance Monitoring inspections and sampling during rain events. In addition, inspections of BMPs at 2009 Outfall 008 and 009 ISRA excavation areas have been conducted weekly since the onset of the rainy season, per the ISRA SWPPP, and installation of containerized plants and a water supply system was continued near HVS-2, per Surface Water Expert Panel recommendations, as weather and soil conditions permitted.

#### **Completed Tasks – February 8, 2010 to March 12, 2010**

- February 8, 2010 – Conducted additional data gap and source delineation sampling in Outfall 009 (NASA property) to support preparation of the 2010 Work Plan Addendum.
- February 13, 2010 – March 12, 2010 – Continued preparing the Phase I (2009) ISRA Implementation Summary Report.
- February 13, 2010 – March 12, 2010 – Continued installation of containerized plants near HVS-2, per Surface Water Expert Panel recommendations, as weather and soil conditions permitted.
- February 17 and 24-25, 2010 – Conducted weekly rainy season BMP inspections per the ISRA SWPPP.



- February 20 and 27, 2010 – Conducted Performance Monitoring inspections and surface water sampling during rain events, per the Performance Monitoring Plan; RWQCB collected split samples.
- February 22, 2010 – Completed Ventura County grading permit close-out requirements.
- February 22, 2010 – March 12, 2010 – Began installation of a water supply system to the planted areas at Outfall 008 (near HVS-2) and at Outfall 009 culvert locations, per the Surface Water Expert Panel recommendations.
- February 22, 2010 – March 12, 2010 – Began preparing Work Plan Addendum for 2010 ISRA implementation.
- February 25-26, 2010 – Conducted sediment mapping in Outfall 009 (Boeing property) to support preparation of 2010 Work Plan Addendum.
- March 2-3 and 9, 2010 – Conducted additional step-out data gap and source delineation sampling in Outfall 009 (Boeing property) to support preparation of the 2010 Work Plan Addendum.
- March 7, 2010 – Conducted Performance Monitoring inspections and surface water sampling during rain event, per the Performance Monitoring Plan.

**30-Day Look ahead – through April 12, 2010**

- Boeing / NASA – Continue preparing Work Plan Addendum for 2010 ISRA implementation.
- Boeing / NASA – Complete the Phase I (2009) ISRA Implementation Summary Report and submit to RWQCB.
- NASA – Conduct additional step-out data gap and source delineation sampling in Outfall 009 (NASA property) to support preparation of the 2010 Work Plan Addendum.
- Boeing – Complete installation of containerized plants near HVS-2 and at Boeing culvert maintenance areas, per Surface Water Expert Panel recommendations.
- Boeing – Complete installation of a water supply system to the planted areas at Outfall 008 (near HVS-2) and at Outfall 009 culvert locations, per the Surface Water Expert Panel recommendations.
- Expert Panel – Recommend plant source (seed / commercial) for 2010 ISRA restoration activities.
- Boeing / NASA – Complete the Biological Report for the 2010 ISRA implementation areas.
- Surface Water Expert Panel – Prepare a schedule for the development of the 2010 ISRA field work restoration plan recommendations.
- Boeing – Continue inspecting all ISRA areas during rain events per the SWPPP and obtain performance monitoring samples per the Performance Monitoring Plan.
- Boeing / NASA – Continue reviewing permitting requirements for the 2010 ISRA implementation field work.
- Boeing – Begin preparing Section 404 Permit Package and submit to ACOE.



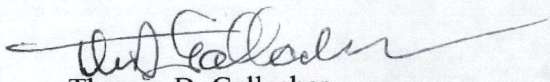
T. Egoscue, RWQCB (SHEA-109713)

March 15, 2010

Page 3

- Boeing – Begin preparing Section 401 Notification and submit to RWQCB.
- Boeing – Begin preparing Ventura County grading permit application for 2010 ISRA implementation areas.
- Boeing/NASA – Prepare for additional soil sampling for 2010 ISRA implementation (e.g., waste characterization sampling or further refinement of planned ISRA areas).

Approved By:



Thomas D. Gallacher  
Director, Santa Susana Field Laboratory  
Environment, Health and Safety

LNB:bjc  
Enclosures

Distribution:  
Mr. Peter Raftery, RWQCB  
Ms. Cassandra Owens, RWQCB  
Mr. Buck King, DTSC  
Mr. Allen Elliott, NASA  
Mr. Steven Slaten, NASA

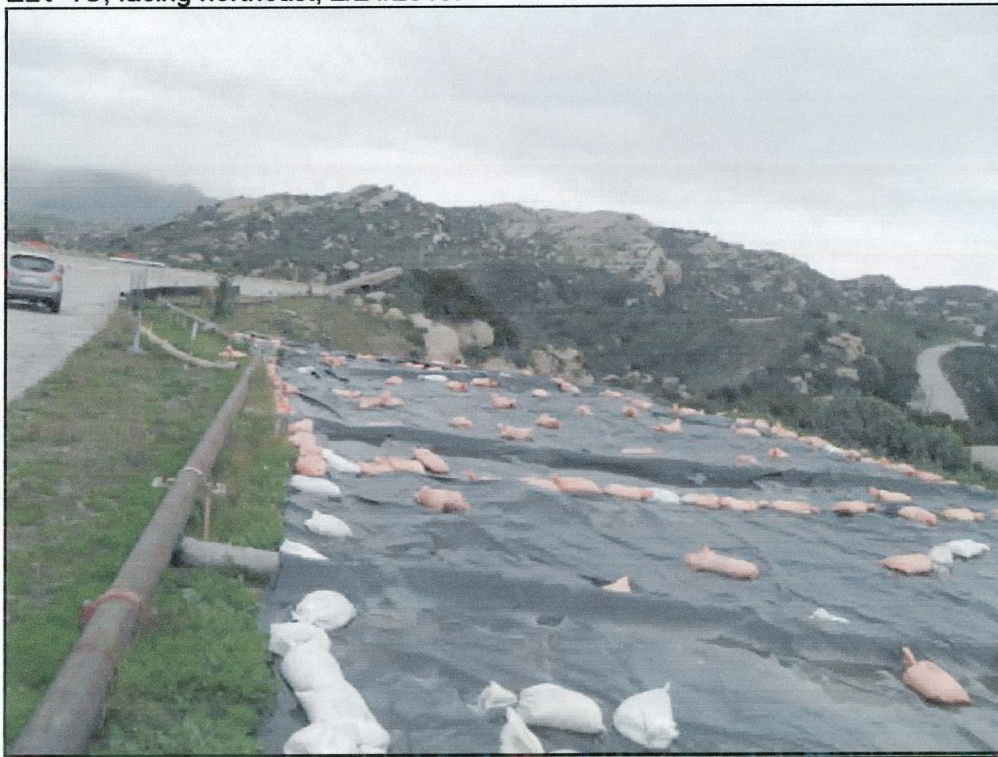


Attachment: BMP Photographs

ELV-1C, facing southwest, 2/24/2010:



ELV-1C, facing northeast, 2/24/2010:





ELV-1D Pond, facing east-southeast, 2/24/2010:



ELV-1D Drainage, facing west-northwest, 2/24/2010:





**A2LF-3 culvert basin (upgradient), facing southwest, 2/27/2010:**



**A2LF-3 culvert outflow (downgradient), facing southwest, 2/27/2010:**





A2LF-1, facing north, 2/24/2010:



CM-8 culvert basin (upgradient), facing north, 2/27/2010:





HVS-2B-2 rock crib, facing southwest, 2/17/2010:



HVS-2B-2 rock crib, facing west, 2/17/2010:



HVS-2A, facing northeast, 3/7/2010:



Happy Valley South fire road near DRG-1 drainage, facing west 2/27/2010:



HVS-3, facing east, 3/7/2010







Happy Valley South Soil Borrow Area, facing east-northeast, 3/7/2010:



Happy Valley South fire road near HVS drainage, facing west 3/7/2010:





HVS drainage at the Happy Valley South fire road, facing west 12/13/2010:

