

Expert Panel Report

Boeing Santa Susana Field Laboratory



Stormwater Expert Panel Members

- Michael Stenstrom, Ph.D., P.E., BCEE
 - [UCLA](#)
- Robert Pitt, Ph.D., P.E., D.WRE, BCEE
 - [University of Alabama](#)
- Jonathan Jones, P.E. D.WRE
 - [Wright Water Engineers](#)
- Robert Gearheart, Ph.D.
 - [Humboldt State University](#)
- Michael Josselyn, Ph.D.
 - [WRA and San Francisco State University](#)



Activities Since May 2009 Hearing

- Participate in Interim Source Removal Action Program
- Advise on Northern Drainage Channel Stabilization
- Oversee Completion of Culvert Modification
ENTS
- Research and Analysis in Support of Stormwater program

ISRA Program

- Panel encouraged and supported the implementation of ISRA as directed by the RWQCB
- Panel activities:
 - Weekly conference calls with agencies and contractors
 - Site visits with agencies
 - Document review
 - Guidance on erosion and sediment controls
 - Preparation of revegetation program

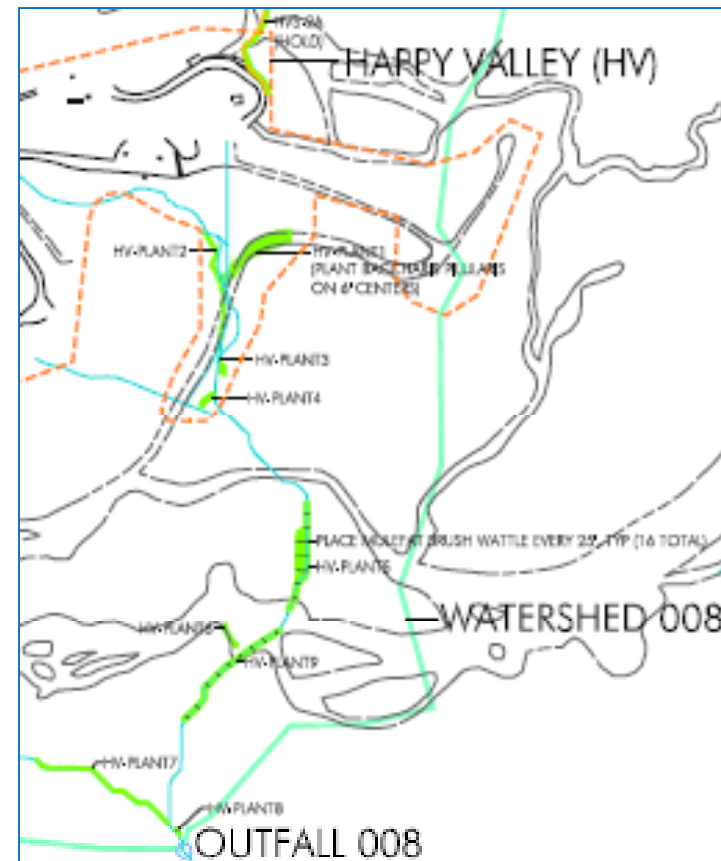


Goals of Revegetation Program

- Stabilize soils
- Establish upland plant community
 - Native hydroseed mix
- Control erosion in drainages
 - Use of nursery grown native plants
 - Wattles in drainages



Planting in Outfall 008 Watershed

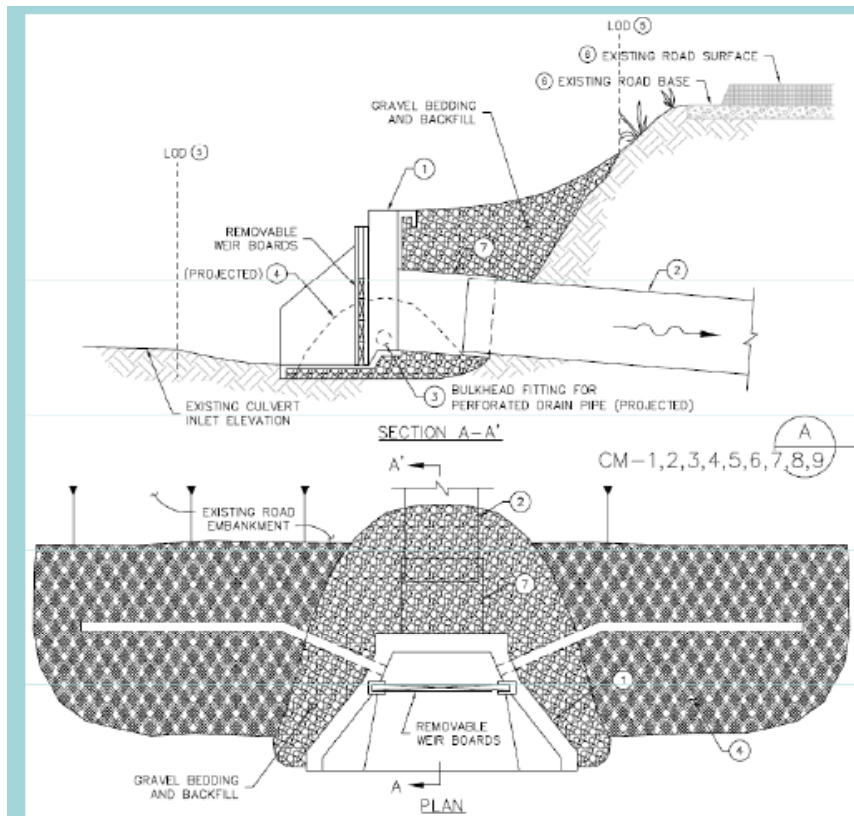




Northern Drainage Clean-Up Activities

- Developed recommendations for addressing channel instability resulting from CAO removal activities
- Will review plans for channel stabilization
- Propose areas for revegetation for bank stabilization

Culvert Modification ENTS



- Portion of ENTS program for Outfall 009
 - Primarily treats open space areas draining to Outfall 009
- Boeing and NASA installed culvert modifications
- Plants will be installed in January



Other Activities

- Media Testing Program
 - Identified and tested performance of stormwater filtration media
 - Tested design parameters
- Stormwater background reports to be submitted to Board (as requested)
 - Metals
 - Dioxins





Looking Forward

- ISRA is identifying and removing “hot spots” containing some constituents that exceeded permit limits
- Other sources – such as soils, wildfires, buildings, and roads – will continue to contribute to concentrations that occasionally exceed NPDES permit limits
- To maximize likelihood of NPDES permit compliance, both ISRA and stormwater treatment facilities will be required